

# Fire experts seek cause of blaze

by Jo Barber

THE exact cause of the huge £1 million plus fire at Bentley Pianos near Stroud may never be firmly pinpointed, said a company chief.

Intense heat during the massive blaze at the Woodchester factory on Thursday night made later investigations difficult went on Mr. Peter Freke, company secretary.

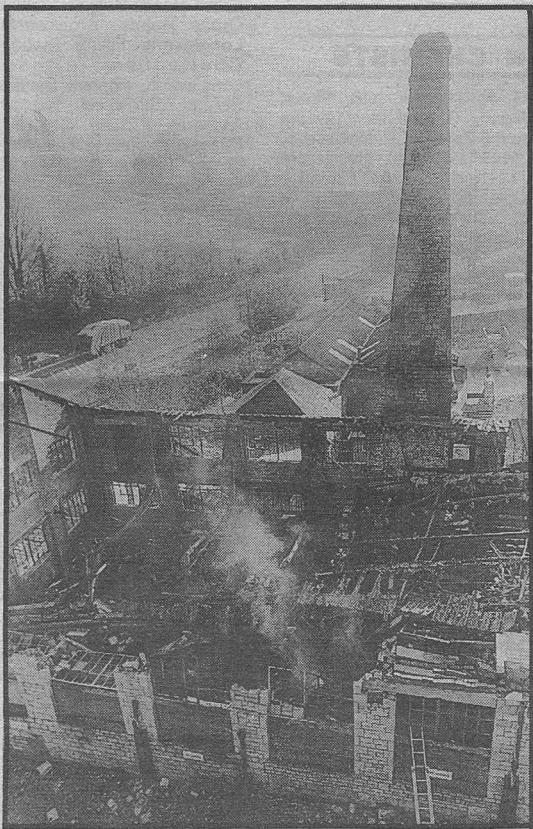
"An electrical fault would seem to be the most logical explanation. The fire started in the area of the main electrical switchgear," he added.

Fire brigade specialists are helping the firm find out just what went wrong.

The flames destroyed machinery and pianos destined for export to Europe and the East. "Many customers with orders outstanding will inevitably be disappointed," said Mr. Freke.

Police have said the cause was not suspicious.

■ A fire crew was called back to the ruined factory last night after flames briefly flared up again.



■ The gutted piano factory

Cit 25/11/89.