

Experience has proved beyond doubt that the mechanical handling of materials in bulk form leads to considerable economies with consequent lowering of production costs, and it is gratifying to know that we have two firms in Stroud, both specialising in the manufacture of plant for the rapid and safe handling of many varieties of materials 'en-masse.'

Redler Conveyors Ltd. and Conveyors (Readybuilt) Ltd. are neighbouring organisations, with adjacent Works situated at Dudbridge, both being operating subsidiaries of a Public Company, Redler Industries Limited, whose shares are quoted on the London Stock Exchange.

Both firms are engaged primarily in the design and manufacture of conveyors and elevators for the 'en-masse' handling of materials in bulk form, and are complementary to each other, but whereas Redler Conveyors Ltd. undertake plant for the heavier industries for which large tonnages up to 150/200 tons per hour have to be handled, Conveyors (Readybuilt) Limited cater generally for the lighter industries whose requirements do not call for the handling of such large quantities.

The principles adopted in the designs are, however, basically similar and were originally covered by the same patents.

The 'en-masse' system of moving materials was invented in the early 1920's and was first exhibited at the Wembley Exhibition of 1924, where it was acknowledged to be an entirely new approach to the subject. It is now recognised as one of the greatest advances in the handling of bulk materials, and is in general use all over the world.

The genius of the "REDLER" system of en-masse conveying is the practical application of the Natural Law that powered, granular or flaky materials can be caused to flow like liquid through totally enclosed casings, by burying a chain of skeleton flights in the material. If the chain of skeleton flights is then caused to move forward,

## REDLER CONVEYORS LIMITED,

Dudbridge Works, Stroud, Glos.

and

## CONVEYORS (Readybuilt) LIMITED,

Cainscross Works, Stroud, Glos.

the whole mass in the casing will move forward as a solid column.

"REDLER" and "R.B." en-masse conveyors offer, in consequence, certain specific advantages:—

Free flowing materials can be moved in any direction.

A single conveyor can be designed to convey horizontally, vertically, inclined or round curves.

A single conveyor can thus often take the place of two or three machines of other types.

Being totally enclosed, the whole system is dust-tight.

Fire Prevention Officers commend such conveyors for handling any materials where fire-risk is present, because there is negligible friction in the material itself, which moves as a quiescent solid column.

During the handling there is no breakage of materials.

These conveyors are self-feeding and non-choking.

All types of en-masse conveyors can be designed to feed or discharge at any point or points in the run.

Materials do not touch any part of the driving mechanism.

These conveyors take up less valuable factory space than other types.

"REDLER" and "R.B." en-masse conveyors are reasonable in first cost, low in power consumption, low in maintenance costs, and will handle from a few pounds up to hundreds of tons per hour.

Dealing briefly with the two firms separately, it may be stated that the present-day organisation of Redler Conveyors Ltd., which is the original company, is complete, in that all machining and assembly operations are carried out at their extensive premises at Dudbridge. Raw materials are received in the form of steel plate and sections, castings and forgings, from which after the many processes of machining, the finished products are manufactured.

To deal with these operations, the Works are equipped with almost every type of machine tool, such as massive shears which can cut up steel plates 3/8" thick and 10ft. long as easily as a piece of paper is cut with scissors, whilst other equally large presses can punch holes and bend up the same plates into all kinds of shapes just as easily.

The main Plate Shop has also a number of large radial drilling machines and grinders of various types in use. This particular Department is served by three overhead cranes of 3 tons lifting capacity, which together cover practically half of the floor area, the rest of the Shop being adequately catered for by lifting units of smaller capacity.

Steel bunkers up to 300 tons capacity, hoppers and chutes are always in course of manufacture.

The Machine Shop is a most important section of the Works, and here can be found modern and up-to-date machines of many kinds, centre lathes, capstan lathes, milling machines,

main products consist of elevators and conveyors, but generally speaking of a lighter type than those made by the associated company, Redler Conveyors Ltd.

The Works are fully equipped with modern machine tools such as centre and capstan lathes, Radial and Vertical drills, Millers, Shapers, Gear Cutters, Grinders, Saws, etc., to enable all component parts to be machined on the premises, whilst for the sake of economy the heavier plant of Redler Conveyors Ltd. is used to produce the sheet steel casing sections which form an integral part of all conveyors and elevators.

An important section of the Works is devoted to the manufacture of hoppers, storage bins, chutes, and other parts necessary for the installation of complete handling plants.

The company has recently entered into an important arrangement with an American company to manufacture under licence a new type of mobile pneumatic grain handling plant. Manufacturing is already in hand and a pilot plant was exhibited for the first time last month at the fourth Mechanical Handling Exhibition, held at Olympia, where it created great interest.

The remaining remarks are equally applicable to both companies:—

DESIGN is an important factor in each organisation, as practically every conveyor or elevator has to be specially considered and designed to suit the site conditions and materials to be handled; therefore, considerable Drawing Office staff has to be employed, and suitable accommodation is provided with ample lighting facilities to enable the work to be carried out efficiently and accurately.

EXPORT is of great importance, and a considerable portion of the output of each company is being shipped overseas especially to Commonwealth countries. This trade is steadily increasing, and every effort is being made in this direction, to ensure that all plant sent from this country shall constitute its own advertising recommendation.



the material. If the chain of skeleton flights is then caused to move forward,

a few pounds up to hundreds of tons per hour.

It is our endeavour  
to make our products

# CONVEY

to the world the high  
quality of British  
workmanship, by  
which we hope to

# ELEVATE

the prestige of  
INDUSTRIAL STROUD

## REDLER CONVEYORS LTD.

CONVEYOR & ELEVATOR MANUFACTURERS

### DUDBRIDGE — STROUD — GLOS.

Telephone: STROUD 525 — 3 lines.

The Machine Shop is a most important section of the Works, and here can be found modern and up-to-date machines of many kinds, centre lathes, capstan lathes, milling machines, shapers, slotters, drills, multiple drills, keyseating and broaching machines, together with a well-equipped tool room, all these being required for machining the gear wheels, chain sprockets, bearings, etc., as also the thousands of components required to make up the special chains used in the completed conveyors and elevators.

As many of these chain components are finally case-hardened before assembly, a Department has been set up to carry out this work, and this is equipped with special oil fired furnaces, also oil and water quenching tanks, together with the necessary pyrometer recording apparatus to ensure accuracy of the heat treatment process.

Reverting now to Conveyors (Ready-built) Limited in particular, of Cainscross Works, as already explained, their

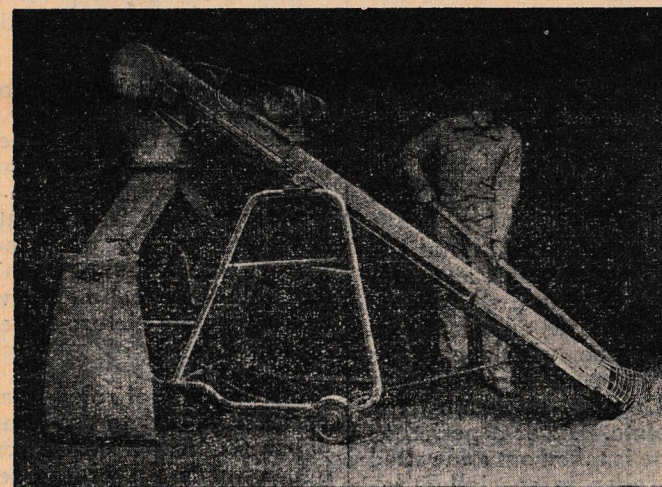
This trade is steadily increasing, and every effort is being made in this direction, to ensure that all plant sent from this country shall constitute its own advertising recommendation.

WELFARE is catered for as far as possible, a new canteen having recently been built and equipped, which can supply all Works employees and office staffs with hot meals, and also accommodate those who wish to bring their own meals.

An excellent cricket pitch is provided within easy reach of the Works, as both firms have run a cricket team for a number of years.

EXTENSIONS and alterations to existing buildings have been consistently carried out over the period of years, and at the present time considerable improvements are in hand at both Works, to enable the companies to manufacture their products with greater efficiency and at the same time to increase their output to meet the growing demand.

## CONVEYORS (READY BUILT) LTD.



Manufacturers of Mechanical Handling Equipment.

CAINSCROSS WORKS, STROUD, GLOS.

Phone Stroud 569-570.

Grams: Arrbee, Stroud.